



Church of England
Primary School

St. Peter's Church of England Primary Summary Information Report 2023-2024



Church of England
Primary School

SEND Team



Mrs. McCullough and Mrs. Hunt



Mrs. Fuller, SEND Governor

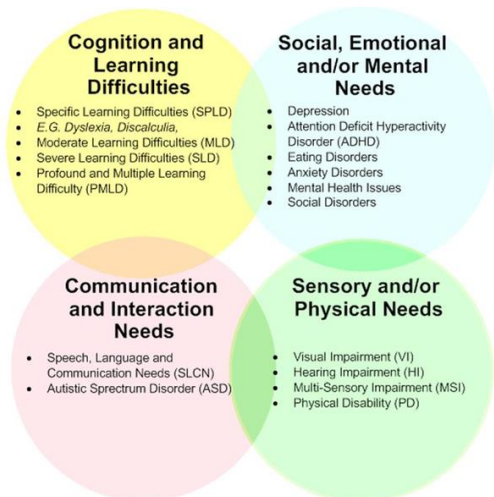
How are needs identified?

- Liaison with nursery school/previous school
- Classroom and school assessment data
- Concerns raised by parent
- Concerns raised by teachers, for example if behaviour or self-esteem is affecting performance
- Liaison with external agencies or health professionals i.e. physical, speech, paediatricians

How are needs identified?

- Liaison with nursery school/previous school
- Classroom and school assessment data
- Concerns raised by parent
- Concerns raised by teachers, for example if behaviour or self-esteem is affecting performance
- Liaison with external agencies or health professionals i.e. physical, speech, paediatricians

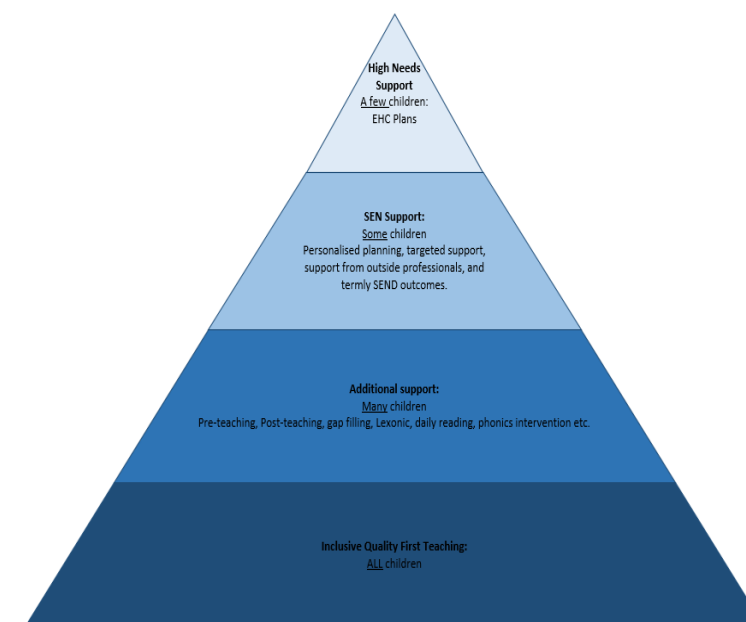
Code of Practice, areas of need:



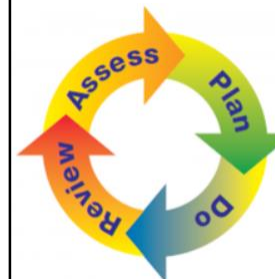
Who do we work with?



Graduated response:



We follow a cycle of assess, plan, do and review. Children's Learning plans, pupil passports and files are stored on Provision Map.





Full SEND Information report:

<https://www.st-peters.n-somerset.sch.uk/page/?title=SEND&pid=123>



How will my child be able to contribute their views?

We value and celebrate each child being able to express their views on all aspects of school life.

Examples may include:

- School council
- Contributions to end of year reports.
- Children who have Learning plans will review their learning termly with their Class Teacher/TA or LSA.
- If your child has an EHC Plan their views will be sought before any review meetings.
- Pupil surveys and pupil voice

How do I raise concerns?

Educating your child is about developing strong relationships, which need to be honest and as open as possible. We pride ourselves on building positive relationships with parents. We are open and honest with parents and hope that they are able to do the same with us.

The best person to share your concerns with initially is your child's class teacher. At some point, you or your child's teacher may wish to involve the SENCO or Phase leader.

If you are still concerned, as a parent or carer you have the right to use the school's complaint process.

Contact details:

Phone: 01275 843142

SENCO – lynnemccullough@spps.school.uk

Deputy Head – angelahunt@spps.school.uk

Learning mentors:

Mrs Liz Barnett

Mrs Evans

Who should I contact if I am considering my child joining the school?

Contact the school Admin office (01275 843142) to arrange to meet the Co-Head teachers **Mrs Catrin Battista/ Mrs Angela Hunt (Deputy Head) or Mr Tim Eustace (Deputy Head)** who would willingly discuss how the school could meet your child's needs.

How are parents involved in the school?

How can I be involved?

- Parents evenings
- Parent working parties
- Parent surveys
- Learning Plan review (3x per year)
- EHCP annual reviews
- SEND and Pastoral coffee mornings
- PSA events

Where can I access support:

Talk Speech and Language Therapy

<https://www.talkspeechtherapy.co.uk/>



I can <https://ican.org.uk/>



Function First Occupational Therapy

<https://www.functionfirstot.co.uk/>



National Autistic Society

<https://www.autism.org.uk/>

My Family Coach

<https://www.myfamilycoach.com/>



Cerebra Sleep Advice

<https://cerebra.org.uk/get-advice-support/sleep-advice-service/>